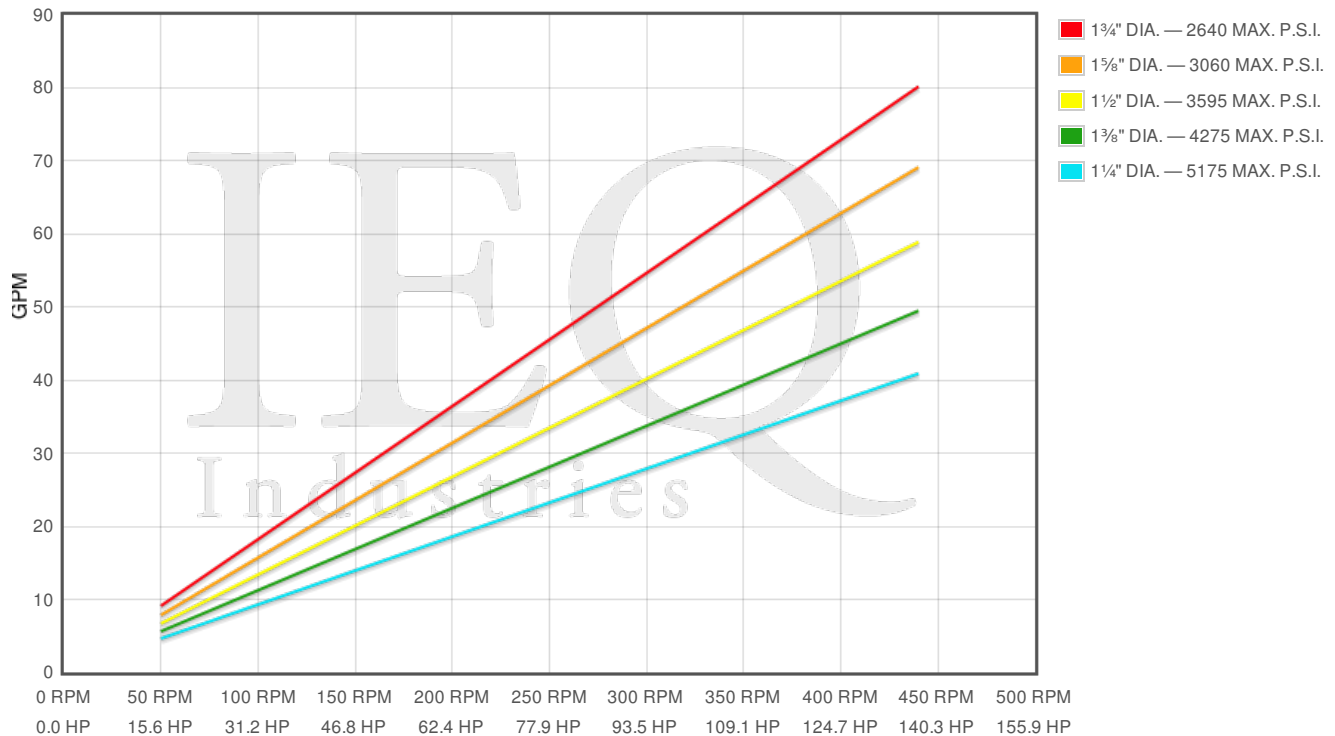
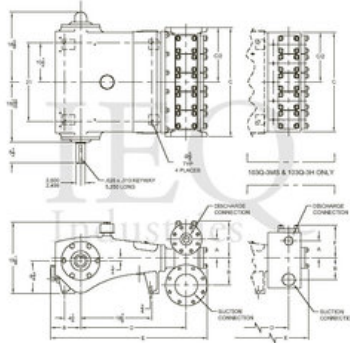


Wheatley, Q3150-MS, Quintuplex, Plunger Pump

Specs

Spec	U.S. Standard
Type:	quintuplex
Minimum Plunger Diameter:	1¼"
Maximum Plunger Diameter:	1¾"
Stroke length:	3½"
Maximum Working Pressure:	5,180 PSI
Rod/Piston Load:	6350lb
Gallons per Minute:	80.2
Barrels per Day:	2750
Brake Horse Power:	137.4



Pump	English Units					50 RPM		150 RPM		250 RPM		350 RPM		440 RPM	
	Plunger Dia. In.	Plunger Area Sq. In.	BPD per RPM	GPM per RPM	Max Press. PSI	BPD	GPM	BPD	GPM	BPD	GPM	BPD	GPM	BPD	GPM
Q3150-MS	1.750	2.4053	6.247	0.1822	2640	312.4	9.111	937.1	27.33	1562	45.55	2187	63.78	2749	80.18
	1.625	2.0739	5.387	0.1571	3062	269.3	7.856	808.0	23.57	1347	39.28	1885	54.99	2370	69.13
	1.500	1.7671	4.590	0.1339	3593	229.5	6.694	688.5	20.08	1147	33.47	1606	46.86	2020	58.9
	1.375	1.4849	3.857	0.1125	4276	192.8	5.625	578.5	16.87	964.2	28.12	1350	39.37	1697	49.5
	1.250	1.2272	3.187	0.0930	5174	159.4	4.648	478.1	13.95	796.9	23.24	1116	32.54	1402	40.91

Disclaimer I

This website is intended as a reference tool only. It has been constructed from published data that is based on manufacturer's sales and engineering documents that are either current, historical and obsolete. Much of the machinery data contained herein has been re-rated through the years with different engineering criteria which maybe in conflict with legacy data. Much of the content published here is calculated online with the use of dynamic data using formulas and extrapolations considered to be sound engineering formulas and are correct to the degree that the data used is accurate. We have done our best to be as precise as as possible in this posting but do not represent any of the calculations or performance data to be entirely accurate. The data published here is intended to be general information rather than actual and to serve as a reference rather than a technical absolute. The user of such data should confirm such information independently.

Copyright and Disclaimers

WheatleyGas.com is your resource for Gaso pumps, Gaso pump parts and a supplier of ORIGINAL GASO PARTS and equipment, new used and remanufactured Wheatley, GASO and Wheatley/GASO plunger and piston pumps and pump parts and is not affiliated with Wheatley/GASO Inc. or its parent company, National Oilwell Varco, Copyright ©2015, IEQ Industries LTD. All rights reserved, *Used under license from Intellectual Property Management Services, LLC