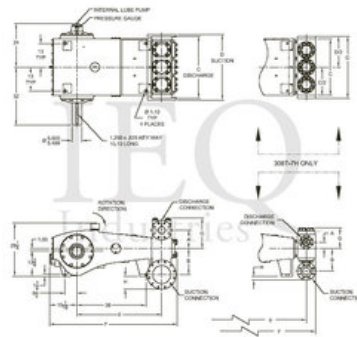


Wheatley, HP360-XL (308T-7XL), Triplex, Plunger Pump

- 308 horsepower 7" stroke horizontal triplex single acting plunger pump
- Available in three fluid end materials
- Pump speeds up to 265 RPM

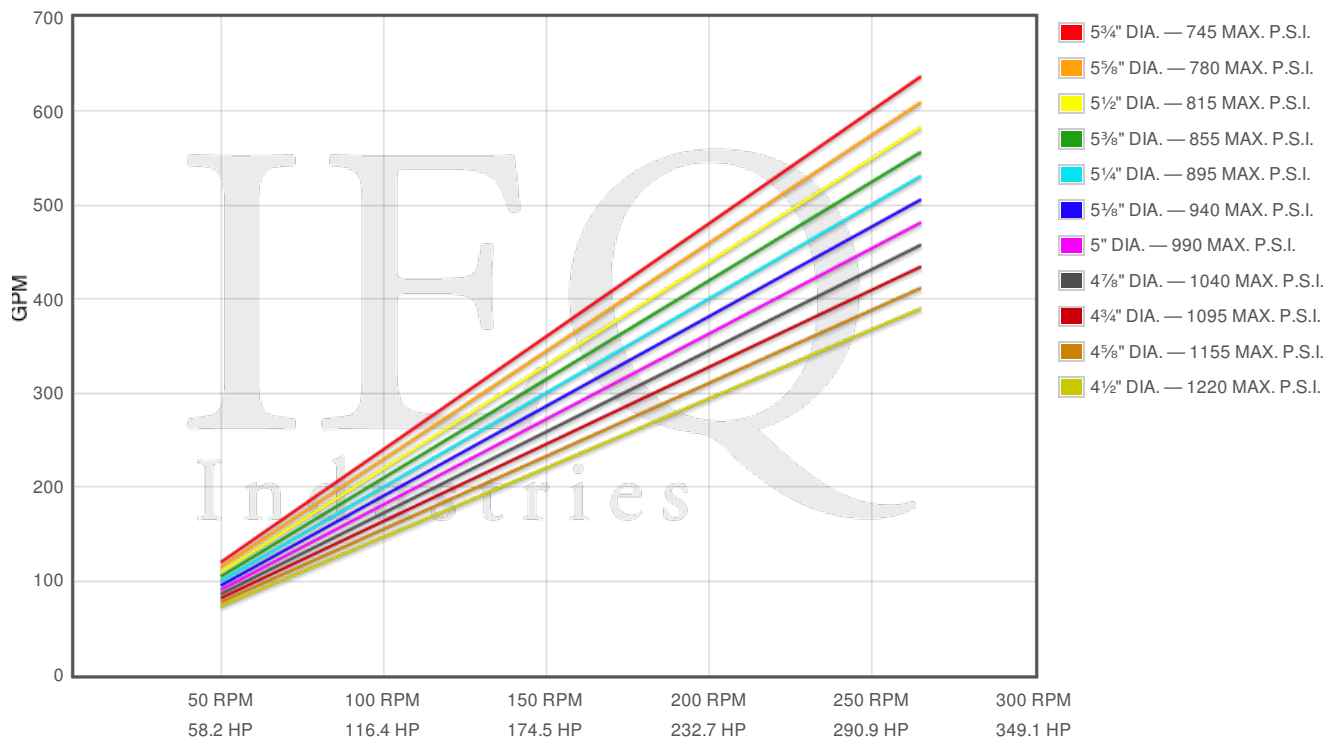
Specs

Spec	U.S. Standard
Type:	triplex
Minimum Plunger Diameter:	4½"
Maximum Plunger Diameter:	5¾"
Stroke length:	7⅞"
Maximum Working Pressure:	1,220 PSI
Rod/Piston Load:	19400lb
Gallons per Minute:	636.7
Barrels per Day:	21830
Brake Horse Power:	308.0



Features/Benefits

- Cast iron power frame
- Ductile Iron crankshaft
- Alloy steel crosshead pins
- Bronze bearing crosshead pin bushings
- Heavy-duty, tapered roller crankshaft bearings
- Precision type, aluminum alloy crankpin bearings
- Cast iron crossheads with upper/lower oil grooves
- Stainless steel extension rods
- Internal pressure lubrication
- Bolted Type Valve Covers
- Removable Stuffing Boxes & Glands
- Plungers - Ceramic, or Tungsten Coated



Pump	English Units					50 RPM		150 RPM		250 RPM		265 RPM	
	Plunger Dia. In.	Plunger Area Sq. In.	BPD per RPM	GPM per RPM	Max Press. PSI	BPD	GPM	BPD	GPM	BPD	GPM	BPD	GPM
HP360-XL 308T-7XL	5.750	25.9672	82.382	2.4028	747	4119	120.1	12360	360.4	20600	600.7	21830	636.7
	5.625	24.8505	78.839	2.2995	781	3942	115.0	11830	344.9	19710	574.9	20890	609.4
	5.500	23.7583	75.374	2.1984	817	3769	109.9	11310	329.8	18840	549.6	19970	582.6
	5.375	22.6906	71.987	2.0996	855	3599	105.0	10800	314.9	18000	524.9	19080	556.4
	5.250	21.6475	68.678	2.0031	896	3434	100.2	10300	300.5	17170	500.8	18200	530.8
	5.125	20.6290	65.446	1.9088	940	3272	95.44	9817	286.3	16360	477.2	17340	505.8
	5.000	19.6350	62.293	1.8169	988	3115	90.84	9344	272.5	15570	454.2	16510	481.5
	4.875	18.6655	59.217	1.7272	1039	2961	86.36	8883	259.1	14800	431.8	15690	457.7
	4.750	17.7205	56.219	1.6397	1095	2811	81.99	8433	246.0	14050	409.9	14900	434.5
	4.625	16.8002	53.299	1.5546	1155	2665	77.73	7995	233.2	13320	388.6	14120	412.0
	4.500	15.9043	50.457	1.4717	1220	2523	73.58	7569	220.7	12610	367.9	13370	390.0

Disclaimer I

This website is intended as a reference tool only. It has been constructed from published data that is based on manufacturer's sales and engineering documents that are either current, historical and obsolete. Much of the machinery data contained herein has been re-rated through the years with different engineering criteria which maybe in conflict with legacy data. Much of the content published here is calculated online with the use of dynamic data using formulas and extrapolations considered to be sound engineering formulas and are correct to the degree that the data used is accurate. We have done our best to be as precise as as possible in this posting but do not represent any of the calculations or performance data to be entirely accurate. The data published here is intended to be general information rather than actual and to serve as a reference rather than a technical absolute. The user of such data should confirm such information independently.

Copyright and Disclaimers

WheatleyGasos.com is your resource for Gaso pumps, Gaso pump parts and a supplier of ORIGINAL GASO PARTS and equipment, new used and remanufactured Wheatley, GASO and Wheatley/GASO plunger and piston pumps and pump parts and is not affiliated with Wheatley/GASO Inc. or its parent company, National Oilwell Varco, Copyright ©2015, IEQ Industries LTD. All rights reserved, *Used under license from Intellectual Property Management Services, LLC