

NEW, USED, AND REFURBISHED PUMPS AND PARTS

WHEATLEYGASO.COM

GASO DUPLEX, GASO TRIPLEX AND GASO QUINTUPLEX PLUNGER
AND PISTON PUMPS BY WHEATLEY AND GASO PUMP

IEQ Industries Ltd

PO Box 230097

Grand Rapids, MI 49523

Phone: 800.544.9053 | 616.452.6882

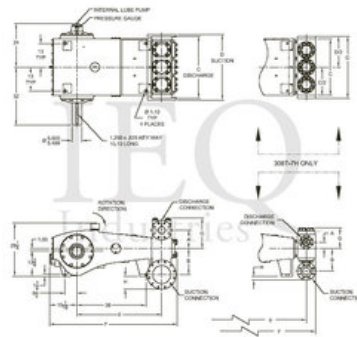
Fax: 888.796.2653

Wheatley, HP360-H (308T-7H), Triplex, Plunger Pump

- 308 horsepower 7" stroke horizontal triplex single acting plunger pump
- Available in three fluid end materials
- Pump speeds up to 265 RPM

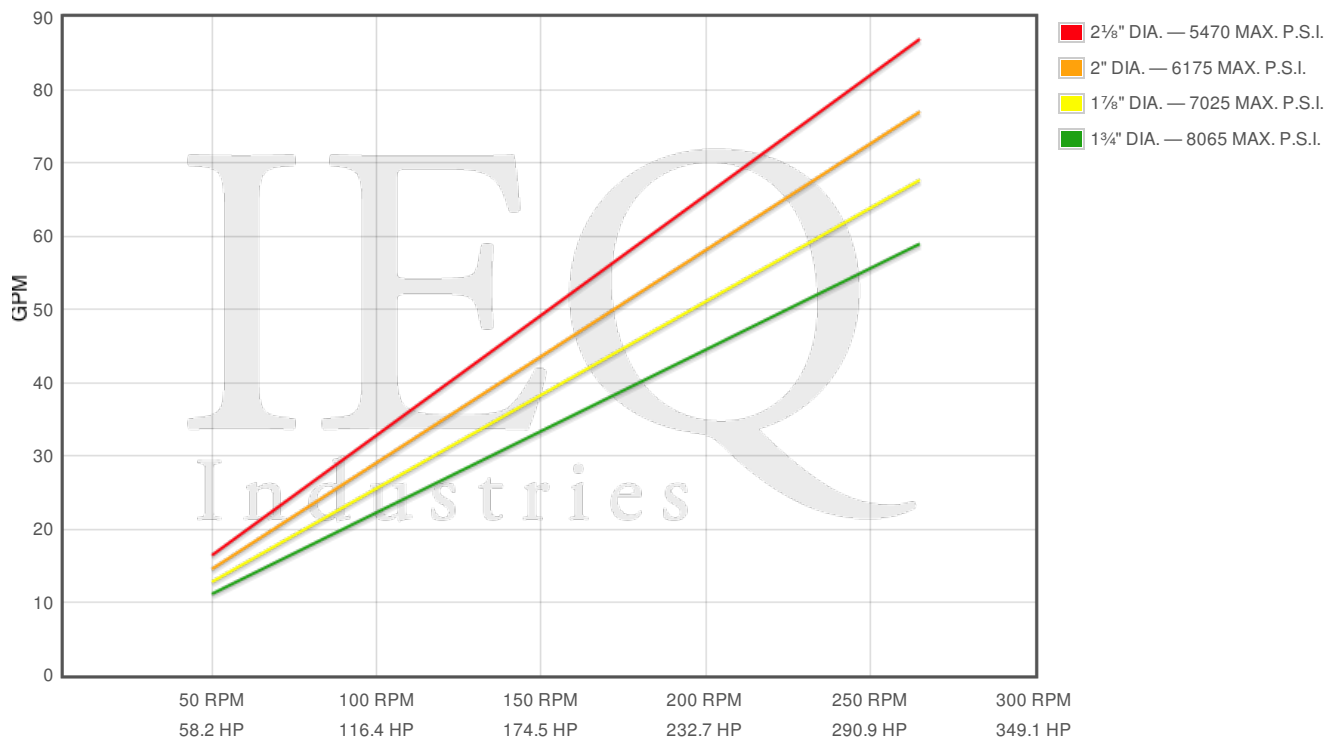
Specs

Spec	U.S. Standard
Type:	triplex
Minimum Plunger Diameter:	1¾"
Maximum Plunger Diameter:	2⅞"
Stroke length:	7⅞"
Maximum Working Pressure:	6,170 PSI
Rod/Piston Load:	19400lb
Gallons per Minute:	87.0
Barrels per Day:	2983
Brake Horse Power:	308.0



Features/Benefits

- Cast iron power frame
- Ductile Iron crankshaft
- Alloy steel crosshead pins
- Bronze bearing crosshead pin bushings
- Heavy-duty, tapered roller crankshaft bearings
- Precision type, aluminum alloy crankpin bearings
- Cast iron crossheads with upper/lower oil grooves
- Stainless steel extension rods
- Internal pressure lubrication
- Bolted Type Valve Covers
- Removable Stuffing Boxes & Glands
- Plungers - Ceramic, or Tungsten Coated



Pump	English Units					50 RPM		150 RPM		250 RPM		265 RPM	
	Plunger Dia. In.	Plunger Area Sq. In.	BPD per RPM	GPM per RPM	Max Press. PSI	BPD	GPM	BPD	GPM	BPD	GPM	BPD	GPM
HP360-H	2.125	3.5466	11.252	0.3282	5470	562.6	16.41	1688	49.23	2813	82.04	2982	86.97
	2.000	3.1416	9.967	0.2907	6175	498.3	14.53	1495	43.6	2492	72.67	2641	77.04
308T-7H	1.875	2.7612	8.760	0.2555	7026	438.0	12.77	1314	38.32	2190	63.87	2321	67.71
	1.750	2.4053	7.631	0.2226	8066	381.5	11.13	1145	33.39	1908	55.64	2022	58.98

Disclaimer I

This website is intended as a reference tool only. It has been constructed from published data that is based on manufacturer's sales and engineering documents that are either current, historical and obsolete. Much of the machinery data contained herein has been re-rated through the years with different engineering criteria which maybe in conflict with legacy data. Much of the content published here is calculated online with the use of dynamic data using formulas and extrapolations considered to be sound engineering formulas and are correct to the degree that the data used is accurate. We have done our best to be as precise as as possible in this posting but do not represent any of the calculations or performance data to be entirely accurate. The data published here is intended to be general information rather than actual and to serve as a reference rather than a technical absolute. The user of such data should confirm such information independently.

Copyright and Disclaimers

WheatleyGas.com is your resource for Gaso pumps, Gaso pump parts and a supplier of ORIGINAL GASO PARTS and equipment, new used and remanufactured Wheatley, GASO and Wheatley/GASO plunger and piston pumps and pump parts and is not affiliated with Wheatley/GASO Inc. or its parent company, National Oilwell Varco, Copyright ©2015, IEQ Industries LTD. All rights reserved, *Used under license from Intellectual Property Management Services, LLC