

NEW, USED, AND REFURBISHED PUMPS AND PARTS

**WHEATLEYGASO.COM**

GASO DUPLEX, GASO TRIPLEX AND GASO QUINTUPLEX PLUNGER  
AND PISTON PUMPS BY WHEATLEY AND GASO PUMP

IEQ Industries Ltd

PO Box 230097

Grand Rapids, MI 49523

Phone: 800.544.9053 | 616.452.6882

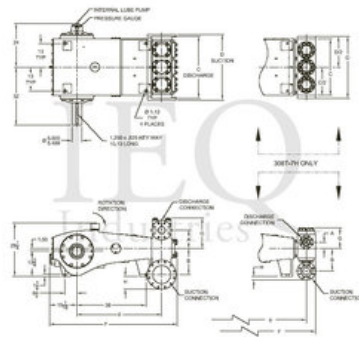
Fax: 888.796.2653

## Wheatley, HP360-AM (308T-7M), Triplex, Plunger Pump

- 308 horsepower 7" stroke horizontal triplex single acting plunger pump
- Available in three fluid end materials
- Pump speeds up to 265 RPM

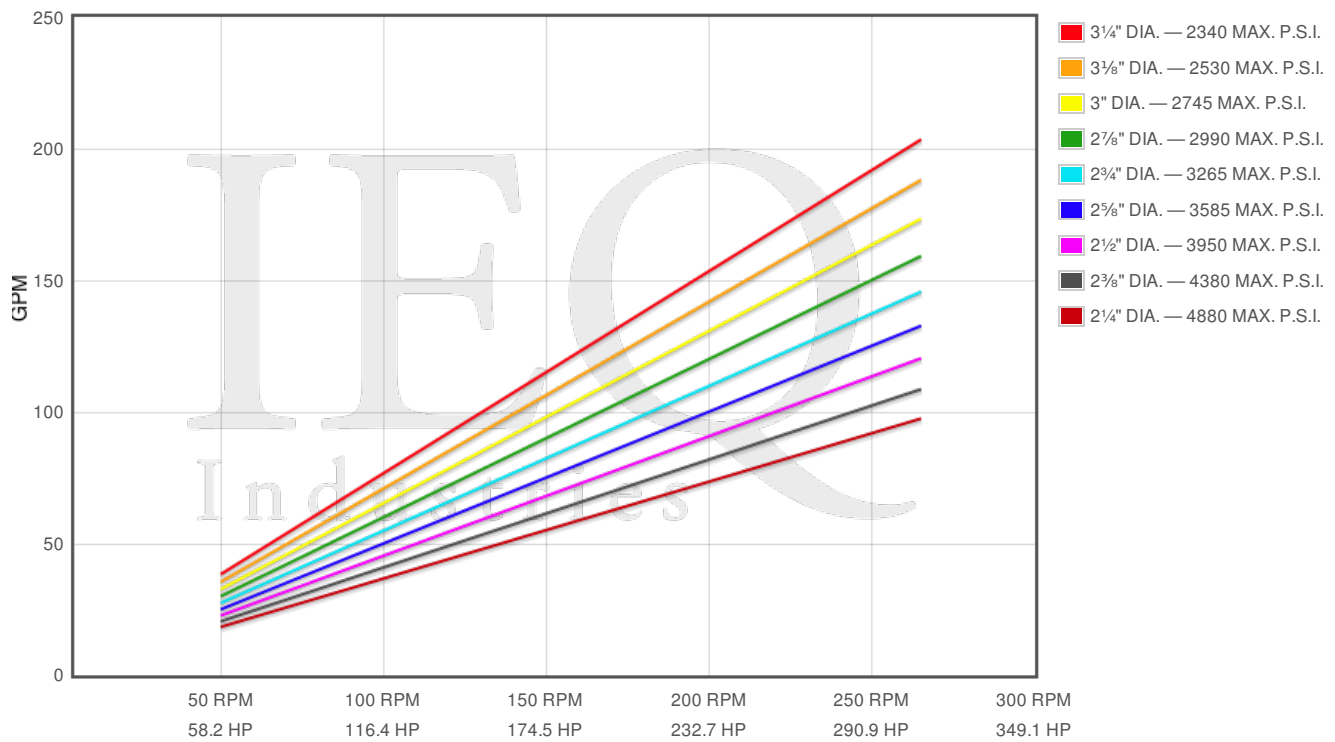
### Specs

Spec	U.S. Standard
Type:	triplex
Minimum Plunger Diameter:	2¼"
Maximum Plunger Diameter:	3¼"
Stroke length:	7⅞"
Maximum Working Pressure:	3,600 PSI
Rod/Piston Load:	19400lb
Gallons per Minute:	203.4
Barrels per Day:	6974
Brake Horse Power:	308.0



### Features/Benefits

- Cast iron power frame
- Ductile Iron crankshaft
- Alloy steel crosshead pins
- Bronze bearing crosshead pin bushings
- Heavy-duty, tapered roller crankshaft bearings
- Precision type, aluminum alloy crankpin bearings
- Cast iron crossheads with upper/lower oil grooves
- Stainless steel extension rods
- Internal pressure lubrication
- Bolted Type Valve Covers
- Removable Stuffing Boxes & Glands
- Plungers - Ceramic, or Tungsten Coated



Pump	English Units					50 RPM		150 RPM		250 RPM		265 RPM	
	Plunger Dia. In.	Plunger Area Sq. In.	BPD per RPM	GPM per RPM	Max Press. PSI	BPD	GPM	BPD	GPM	BPD	GPM	BPD	GPM
HP360-AM 308T-7M	3.250	8.2958	26.319	0.7676	2339	1316	38.38	3948	115.1	6580	191.9	6974	203.4
	3.125	7.6699	24.333	0.7097	2529	1217	35.49	3650	106.5	6083	177.4	6448	188.1
	3.000	7.0686	22.425	0.6541	2745	1121	32.7	3364	98.11	5606	163.5	5943	173.3
	2.875	6.4918	20.596	0.6007	2988	1030	30.04	3089	90.11	5149	150.2	5458	159.2
	2.750	5.9396	18.844	0.5496	3266	942.2	27.48	2827	82.44	4711	137.4	4994	145.6
	2.625	5.4119	17.169	0.5008	3585	858.5	25.04	2575	75.12	4292	125.2	4550	132.7
	2.500	4.9087	15.573	0.4542	3952	778.7	22.71	2336	68.13	3893	113.6	4127	120.4
	2.375	4.4301	14.055	0.4099	4379	702.7	20.5	2108	61.49	3514	102.5	3725	108.6
	2.250	3.9761	12.614	0.3679	4879	630.7	18.4	1892	55.19	3154	91.98	3343	97.5

### Disclaimer I

This website is intended as a reference tool only. It has been constructed from published data that is based on manufacturer's sales and engineering documents that are either current, historical and obsolete. Much of the machinery data contained herein has been re-rated through the years with different engineering criteria which may be in conflict with legacy data. Much of the content published here is calculated online with the use of dynamic data using formulas and extrapolations considered to be sound engineering formulas and are correct to the degree that the data used is accurate. We have done our best to be as precise as possible in this posting but do not represent any of the calculations or performance data to be entirely accurate. The data published here is intended to be general information rather than actual and to serve as a reference rather than a technical absolute. The user of such data should confirm such information independently.

### Copyright and Disclaimers

WheatleyGas.com is your resource for Gaso pumps, Gaso pump parts and a supplier of ORIGINAL GASO PARTS and equipment, new used and remanufactured Wheatley, GASO and Wheatley/GASO plunger and piston pumps and pump parts and is not affiliated with Wheatley/GASO Inc. or its parent company, National Oilwell Varco, Copyright ©2015, IEQ Industries LTD. All rights reserved, \*Used under license from Intellectual Property Management Services, LLC