

NEW, USED, AND REFURBISHED PUMPS AND PARTS

WHEATLEYGASO.COM

GASO DUPLEX, GASO TRIPLEX AND GASO QUINTUPLEX PLUNGER
AND PISTON PUMPS BY WHEATLEY AND GASO PUMP

IEQ Industries Ltd

PO Box 230097

Grand Rapids, MI 49523

Phone: 800.544.9053 | 616.452.6882

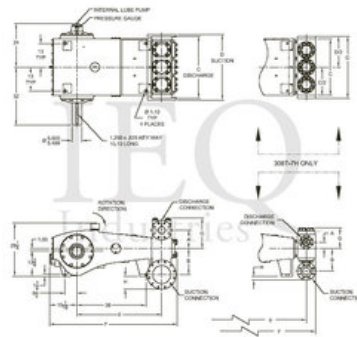
Fax: 888.796.2653

Wheatley, HP360-AL (308T-7L), Triplex, Plunger Pump

- 308 horsepower 7" stroke horizontal triplex single acting plunger pump
- Available in three fluid end materials
- Pump speeds up to 265 RPM

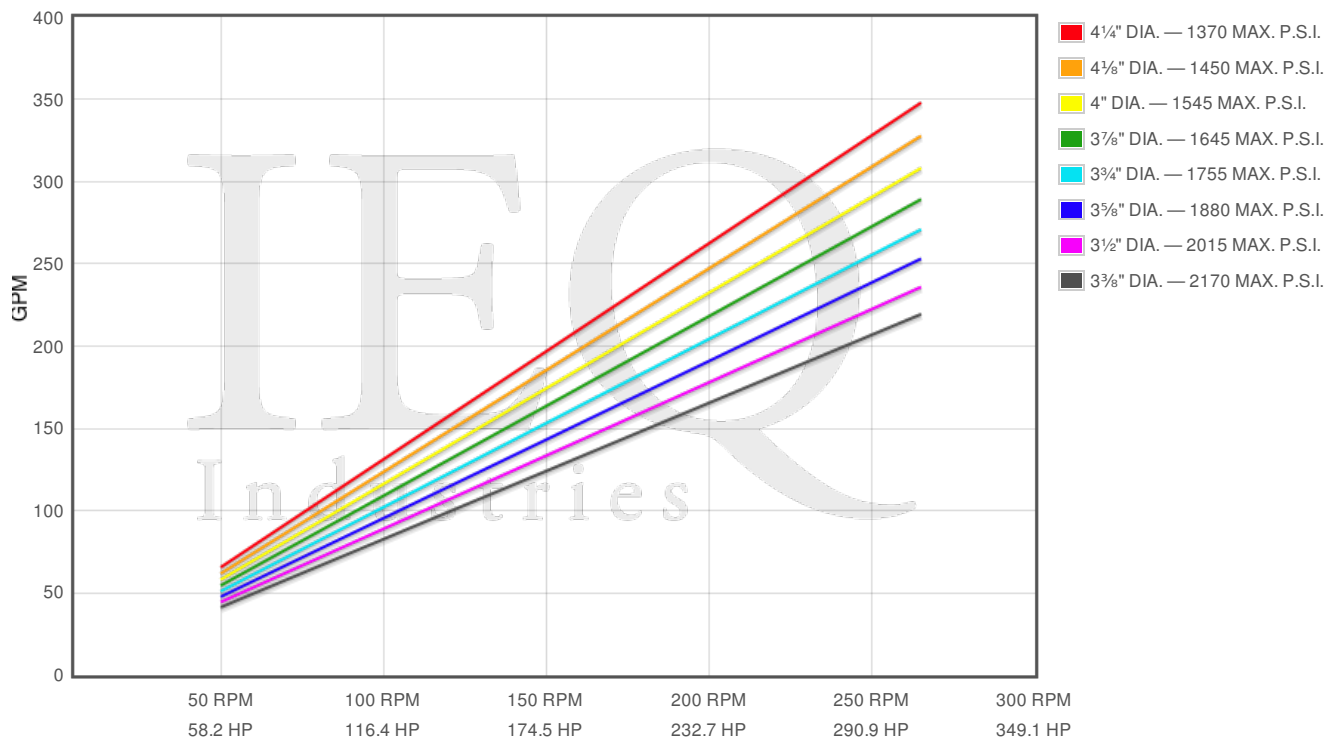
Specs

Spec	U.S. Standard
Type:	triplex
Minimum Plunger Diameter:	3 $\frac{3}{8}$ "
Maximum Plunger Diameter:	4 $\frac{1}{4}$ "
Stroke length:	7 $\frac{1}{8}$ "
Maximum Working Pressure:	2,169 PSI
Rod/Piston Load:	19400lb
Gallons per Minute:	347.9
Barrels per Day:	11930
Brake Horse Power:	308.0



Features/Benefits

- Cast iron power frame
- Ductile Iron crankshaft
- Alloy steel crosshead pins
- Bronze bearing crosshead pin bushings
- Heavy-duty, tapered roller crankshaft bearings
- Precision type, aluminum alloy crankpin bearings
- Cast iron crossheads with upper/lower oil grooves
- Stainless steel extension rods
- Internal pressure lubrication
- Bolted Type Valve Covers
- Removable Stuffing Boxes & Glands
- Plungers - Ceramic, or Tungsten Coated



Pump	English Units					50 RPM		150 RPM		250 RPM		265 RPM	
	Plunger Dia. In.	Plunger Area Sq. In.	BPD per RPM	GPM per RPM	Max Press. PSI	BPD	GPM	BPD	GPM	BPD	GPM	BPD	GPM
HP360-AL 308T-7L	4.250	14.1863	45.006	1.3127	1368	2250	65.63	6751	196.9	11250	328.2	11930	347.9
	4.125	13.3640	42.398	1.2366	1452	2120	61.83	6360	185.5	10600	309.2	11240	327.7
	4.000	12.5664	39.867	1.1628	1544	1993	58.14	5980	174.4	9967	290.7	10560	308.1
	3.875	11.7932	37.415	1.0913	1645	1871	54.56	5612	163.7	9354	272.8	9915	289.2
	3.750	11.0447	35.040	1.0220	1757	1752	51.1	5256	153.3	8760	255.5	9286	270.8
	3.625	10.3206	32.743	0.9550	1880	1637	47.75	4911	143.2	8186	238.7	8677	253.1
	3.500	9.6211	30.523	0.8903	2016	1526	44.51	4579	133.5	7631	222.6	8089	235.9
	3.375	8.9462	28.382	0.8278	2169	1419	41.39	4257	124.2	7096	207.0	7521	219.4

Disclaimer I

This website is intended as a reference tool only. It has been constructed from published data that is based on manufacturer's sales and engineering documents that are either current, historical and obsolete. Much of the machinery data contained herein has been re-rated through the years with different engineering criteria which maybe in conflict with legacy data. Much of the content published here is calculated online with the use of dynamic data using formulas and extrapolations considered to be sound engineering formulas and are correct to the degree that the data used is accurate. We have done our best to be as precise as as possible in this posting but do not represent any of the calculations or performance data to be entirely accurate. The data published here is intended to be general information rather than actual and to serve as a reference rather than a technical absolute. The user of such data should confirm such information independently.

Copyright and Disclaimers

WheatleyGaso.com is your resource for Gaso pumps, Gaso pump parts and a supplier of ORIGINAL GASO PARTS and equipment, new used and remanufactured Wheatley, GASO and Wheatley/GASO plunger and piston pumps and pump parts and is not affiliated with Wheatley/GASO Inc. or its parent company, National Oilwell Varco, Copyright ©2015, IEQ Industries LTD. All rights reserved, *Used under license from Intellectual Property Management Services, LLC